



*ExpertAdvisor*TM

Chart Objects Plug-in

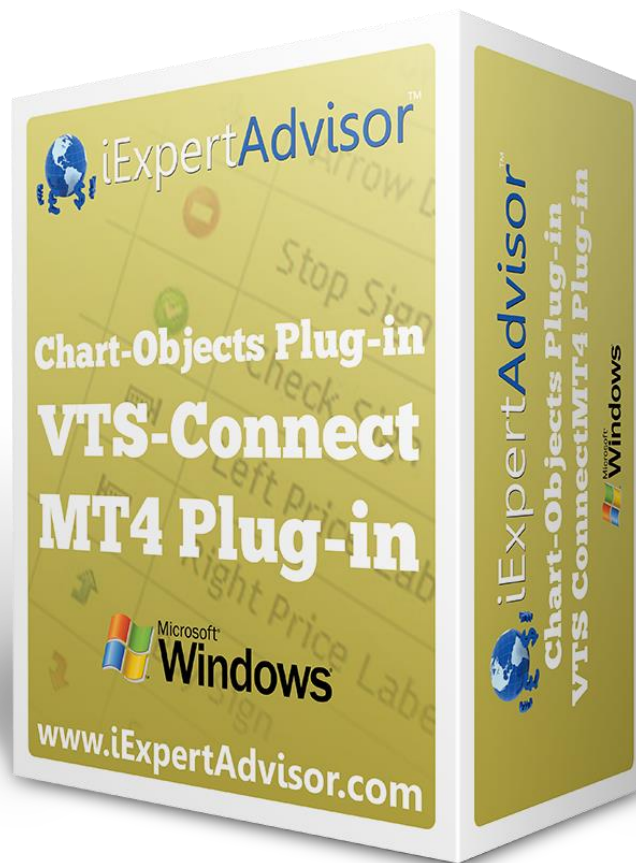


Chart Objects Plug-in

Requires VTS-Connect minimum version 4.0.0.65

The **Chart Objects** Plug-in allows you to easily add objects to any MetaTrader price chart. Chart objects include: horizontal lines, vertical lines, arrows, thumbs, labels, any text, check marks and stops signs. The chart object functions are available from the VTS Toolbox and are dragged, dropped and connected just like any other function.

What is a Plug-in?

VTS stands for Visual Traders Studio.

The VTS Expert Advisor Builder is a Windows graphical application that enables non-programmers to build complex Expert Advisors by dragging, dropping and connecting logical elements.

The VTS application contains basic functionality to build almost any Expert Advisor.

A VTS Plug-in allows traders to easily implement advanced trading techniques using an add-on user interface.

Contents

Requires VTS-Connect minimum version 4.0.0.65	2
Chart Object Functions in the Toolbox	5
Chart Objects Functions	6
fnDrawHorizontalLine	6
Parameters on the <i>Configuration</i> Tab	7
Parameters on the <i>Advanced</i> Tab.....	8
fnDrawVerticalLine	10
Parameters on the <i>Configuration</i> Tab	10
Parameters on the <i>Advanced</i> Tab.....	12
fnDrawArrow	14
Parameters on the <i>Configuration</i> Tab	14
Parameters on the <i>Advanced</i> Tab.....	16
fnDrawThumb	18
Parameters on the <i>Configuration</i> Tab	18
Parameters on the <i>Advanced</i> Tab.....	20
fnDrawLabel	22
Parameters on the <i>Configuration</i> Tab	22
Parameters on the <i>Advanced</i> Tab.....	24
fnDrawText	26
Parameters on the <i>Configuration</i> Tab	26
Parameters on the <i>Advanced</i> Tab.....	28
fnDrawCheckSign	30
Parameters on the <i>Configuration</i> Tab	30
Parameters on the <i>Advanced</i> Tab.....	32
fnDrawStopSign	34
Parameters on the <i>Configuration</i> Tab	34
Parameters on the <i>Advanced</i> Tab.....	36
Chart Objects on the Drawing Pad	38
Chart Objects on a MetaTrader Price Chart	39

Enable the Chart Objects Plug-in

You must enter your License key to enable the **Chart Objects Plug-in**. Your license key for all of your VTS products can be found in the [Members Area](#).

License keys are entered in Visual Traders Studio (VTS) from the License entry tab.

- The **email** address is the email address used to purchase [VTS](#).
- The **License Key** is the key listed in the Members Area.
- The **Update** button is used to verify the email address and license key.
- The **edit key** button is used to edit the key value.

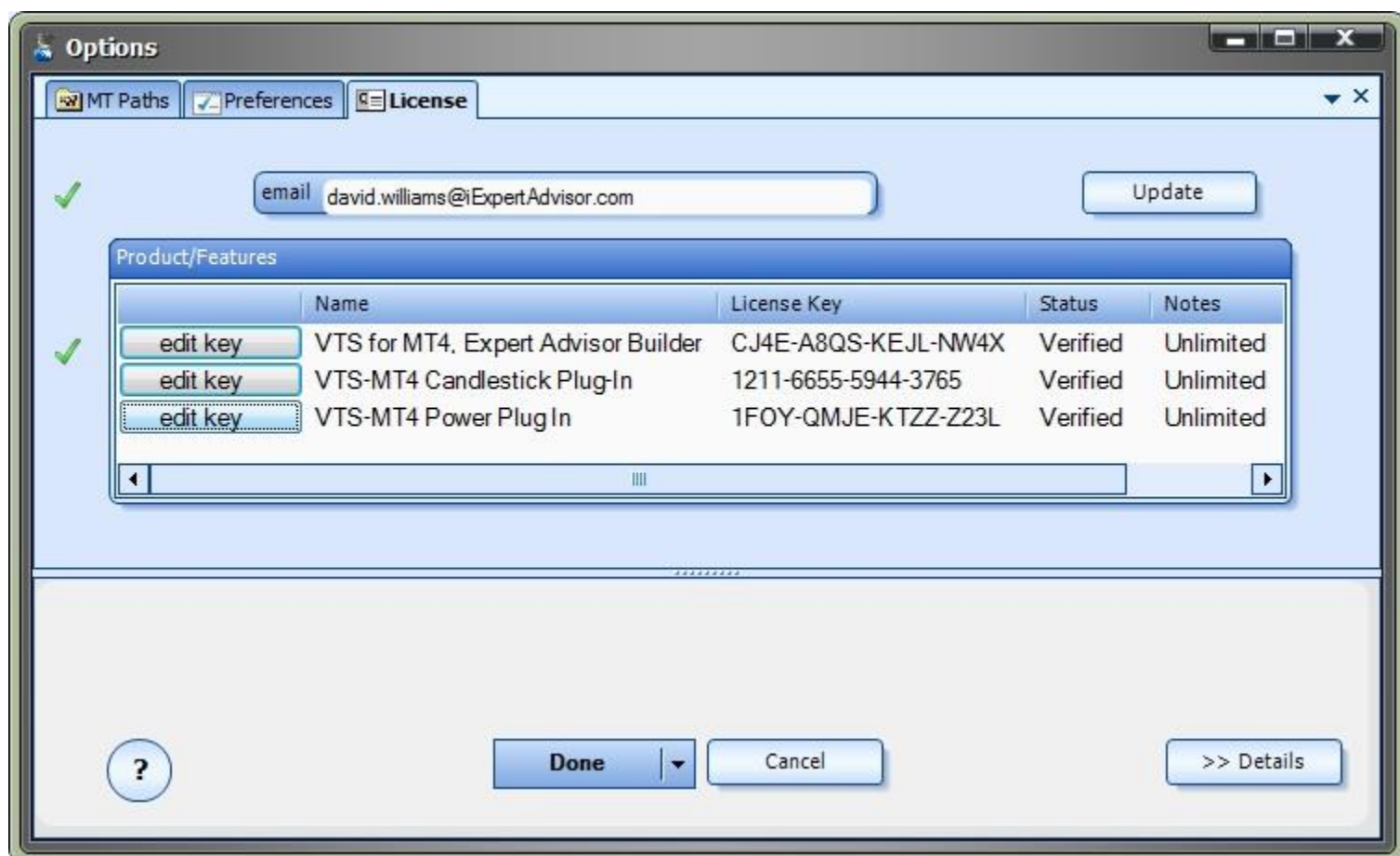


Chart Object Functions in the Toolbox

Once enabled, the **Chart Object** functions are available in the [Toolbox](#) Function tab under the **ChartObjects** menu.

These functions are dragged & dropped from the Toolbox onto the [Drawing Pad](#) like other function.

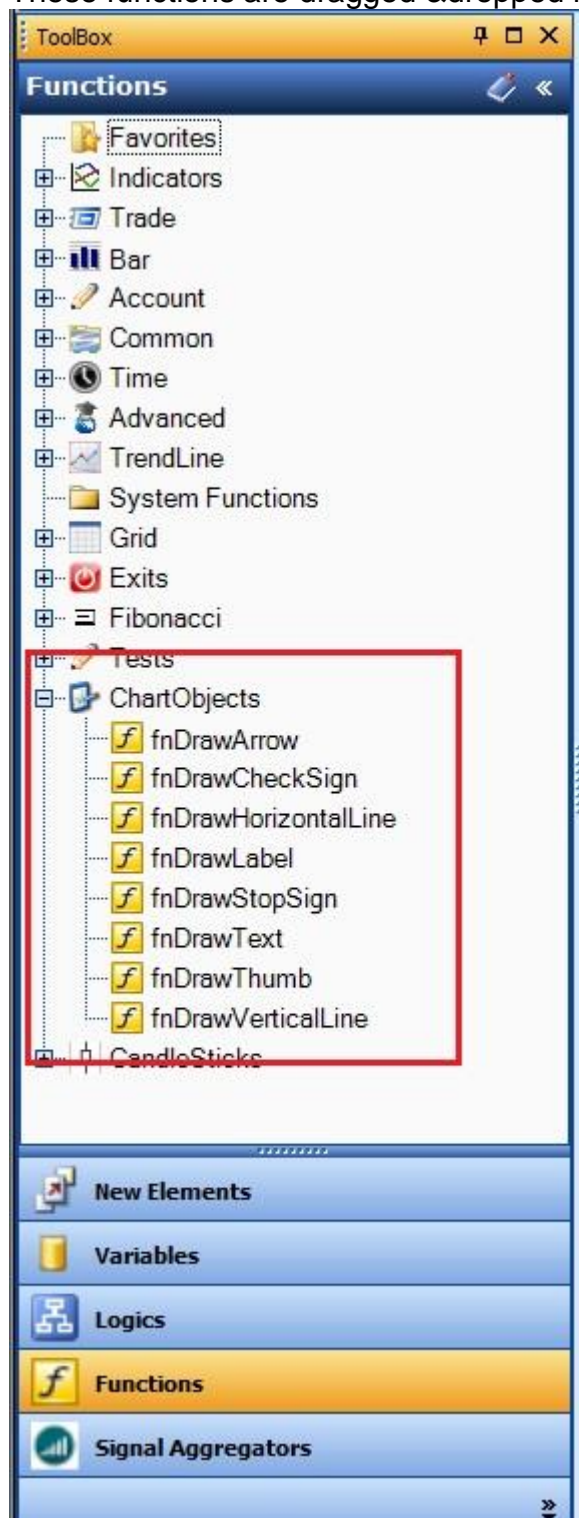


Chart Objects Functions

The Chart Objects function library include these functions:

- [fnDrawHorizontalLine](#)
 - Used to draw a horizontal line. Positioned by price.
- [fnDrawVerticalLine](#)
 - Used to draw a vertical line. Positioned by candle.
- [fnDrawArrow](#)
 - Used to draw an up or down arrow. Positioned by price and candle.
- [fnDrawThumb](#)
 - Used to draw an up or down thumb. Positioned by price and candle.
- [fnDrawLabel](#)
 - Used to draw an label containing text. Positioned by price and candle.
- [fnDrawText](#)
 - Used to draw text. Positioned by x and y coordinates.
- [fnDrawCheckSign](#)
 - Used to draw a check mark. Positioned by price and candle.
- [fnDrawStopSign](#)
 - Used to draw a stop sign. Positioned by price and candle.

fnDrawHorizontalLine

The **fnDrawHorizontalLine** is used to draw a horizontal line on a price chart. It is positioned by price.

After the **fnDrawHorizontalLine** function has been added to a [Drawing](#), it is configured by clicking the (+) button along the bottom of the [Element](#).

The [Function Configuration](#) window allows you to select values for each parameter.

Each Chart Object function offers a number of parameters on the **Configuration** Tab, and also a number of parameters on the **Advanced** Tab.

- Parameters on the **Configuration** Tab should be inspected and set each time the function is added to a drawing.
- Parameters on the **Advanced** Tab usually do not need to be changed from their default values.

Parameters on the *Configuration* Tab

Parameter Name	Data type	Description
name	String	The name of the object. Each object on a chart must have a unique name. Note: String parameters require enclosing quotes. Objects names can viewed from the MetaTrader platform by going to: Charts->Objects->Object List
price	Double	The price value used to position the object's horizontal location on the price chart.
lineColor	Color	The color of the object.

The screenshot shows the configuration window for the `fnDrawHorizontalLine2` function. The window is titled `fnDrawHorizontalLine2` and has a subtitle `fnDrawHorizontalLine("hline",High[...]`. The **Configure** tab is selected, showing three parameters:

- name:** Set to "hline".
- price:** Set to High[1].
- lineColor:** Set to Red.

Each parameter has a 'Choose ...' button and an 'Add Input Parameter' link. At the bottom, the 'Name:' field is set to `fnDrawHorizontalLine2`. The window also includes a 'Done' button, an 'OK' button, and a '>> Details' button.

Parameters on the *Advanced* Tab

Parameter Name	Data type	Description
redraw	Integer	<p>The interval when to redraw the object. The pull-down menu offers these choices: REDRAW_ONCE: draw the object once only. REDRAW_BAR: redraw the object on each new bar. REDRAW_TICK: redraw the object on each new tick. Note: The object function must be connected on the drawing so that it executes on each tick for the redraw options to work correctly.</p> <p>Objects that use the shift parameter will move on the chart as new candles are formed.</p>
lineWidth	Integer	<p>The width of the line. Note: Styles only work when the lineWidth is 1.</p>
lineStyle	Integer	<p>The line style. The pull-down menu offers these choices: STYLE_SOLID STYLE_DASH STYLE_DOT STYLE_DASHDOT STYLE_DASHDOTDOT Note: Styles only work when the lineWidth is 1.</p>
chartID	Integer	The chart identifier. Use 0 for the current chart.
windowID	Integer	The window identifier. Use 0 for the current window.



fnDrawVerticalLine

The **fnDrawVerticalLine** is used to draw a vertical line on a price chart. It is positioned by a [shift](#) value.

After the **fnDrawVerticalLine** function has been added to a [Drawing](#), it is configured by clicking the (+) button along the bottom of the [Element](#).

The [Function Configuration](#) window allows you to select values for each parameter.

Each Chart Object function offers a number of parameters on the **Configuration** Tab, and also a number of parameters on the **Advanced** Tab.

- Parameters on the **Configuration** Tab should be inspected and set each time the function is added to a drawing.
- Parameters on the **Advanced** Tab usually do not need to be changed from their default values.

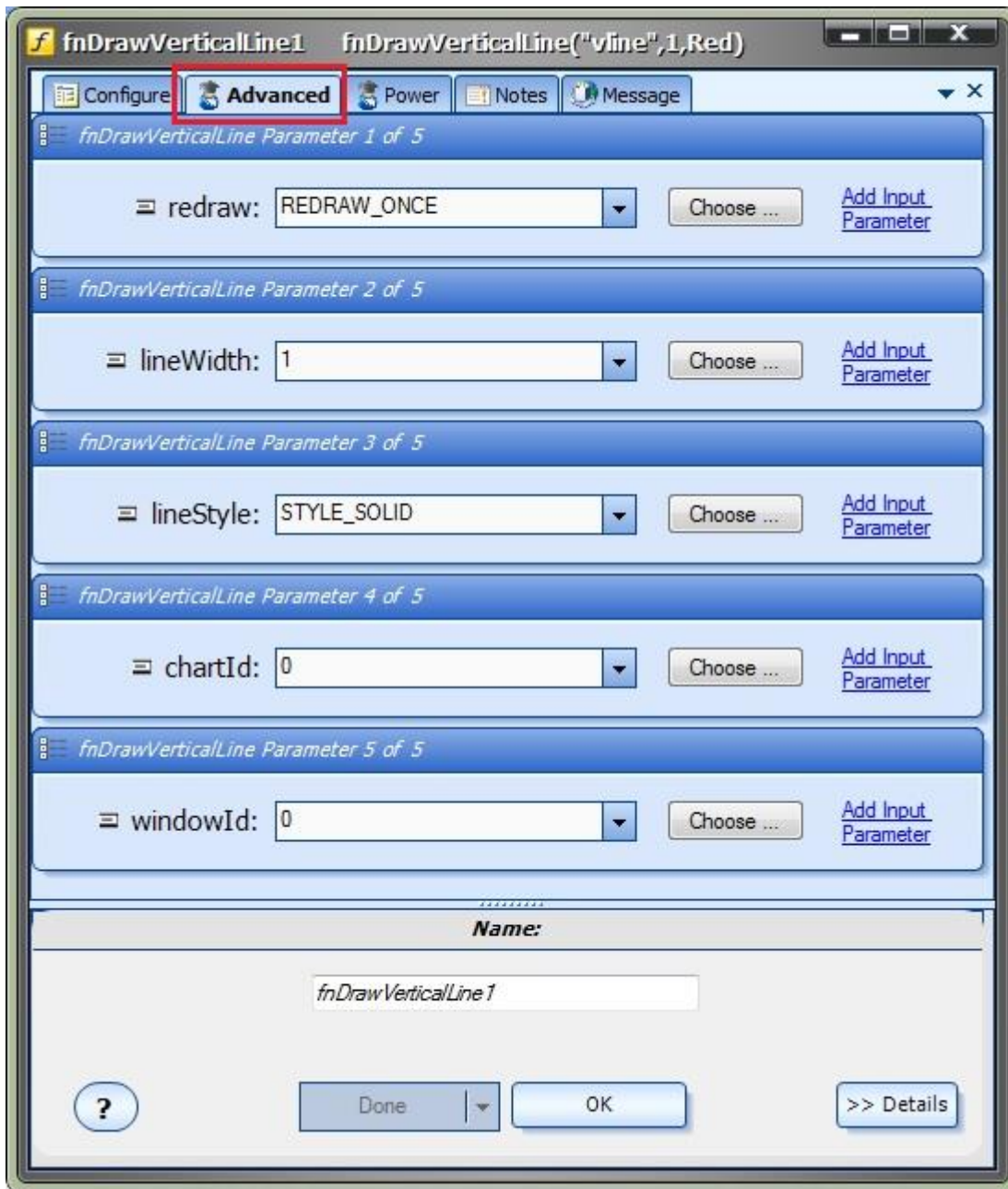
Parameters on the *Configuration* Tab

Parameter Name	Data type	Description
name	String	The name of the object. Each object on a chart must have a unique name. Note: String parameters require enclosing quotes. Objects names can viewed from the MetaTrader platform by going to: Charts->Objects->Object List
shift	Integer	The candle shift used to position the object's vertical location on the price chart.
lineColor	Color	The color of the object.



Parameters on the *Advanced* Tab

Parameter Name	Data type	Description
redraw	Integer	<p>The interval when to redraw the object. The pull-down menu offers these choices:</p> <p>REDRAW_ONCE: draw the object once only.</p> <p>REDRAW_BAR: redraw the object on each new bar.</p> <p>REDRAW_TICK: redraw the object on each new tick.</p> <p>Note: The object function must be connected on the drawing so that it executes on each tick for the redraw options to work correctly.</p> <p>Objects that use the shift parameter will move on the chart as new candles are formed.</p>
lineWidth	Integer	<p>The width of the line.</p> <p>Note: Styles only work when the lineWidth is 1.</p>
lineStyle	Integer	<p>The line style. The pull-down menu offers these choices:</p> <p>STYLE_SOLID</p> <p>STYLE_DASH</p> <p>STYLE_DOT</p> <p>STYLE_DASHDOT</p> <p>STYLE_DASHDOTDOT</p> <p>Note: Styles only work when the lineWidth is 1.</p>
chartID	Integer	The chart identifier. Use 0 for the current chart.
windowID	Integer	The window identifier. Use 0 for the current window.



fnDrawArrow

The **fnDrawArrow** is used to draw an up or down arrow on a price chart. It is positioned by price and shift value.

After the **fnDrawArrow** function has been added to a [Drawing](#), it is configured by clicking the (+) button along the bottom of the [Element](#).

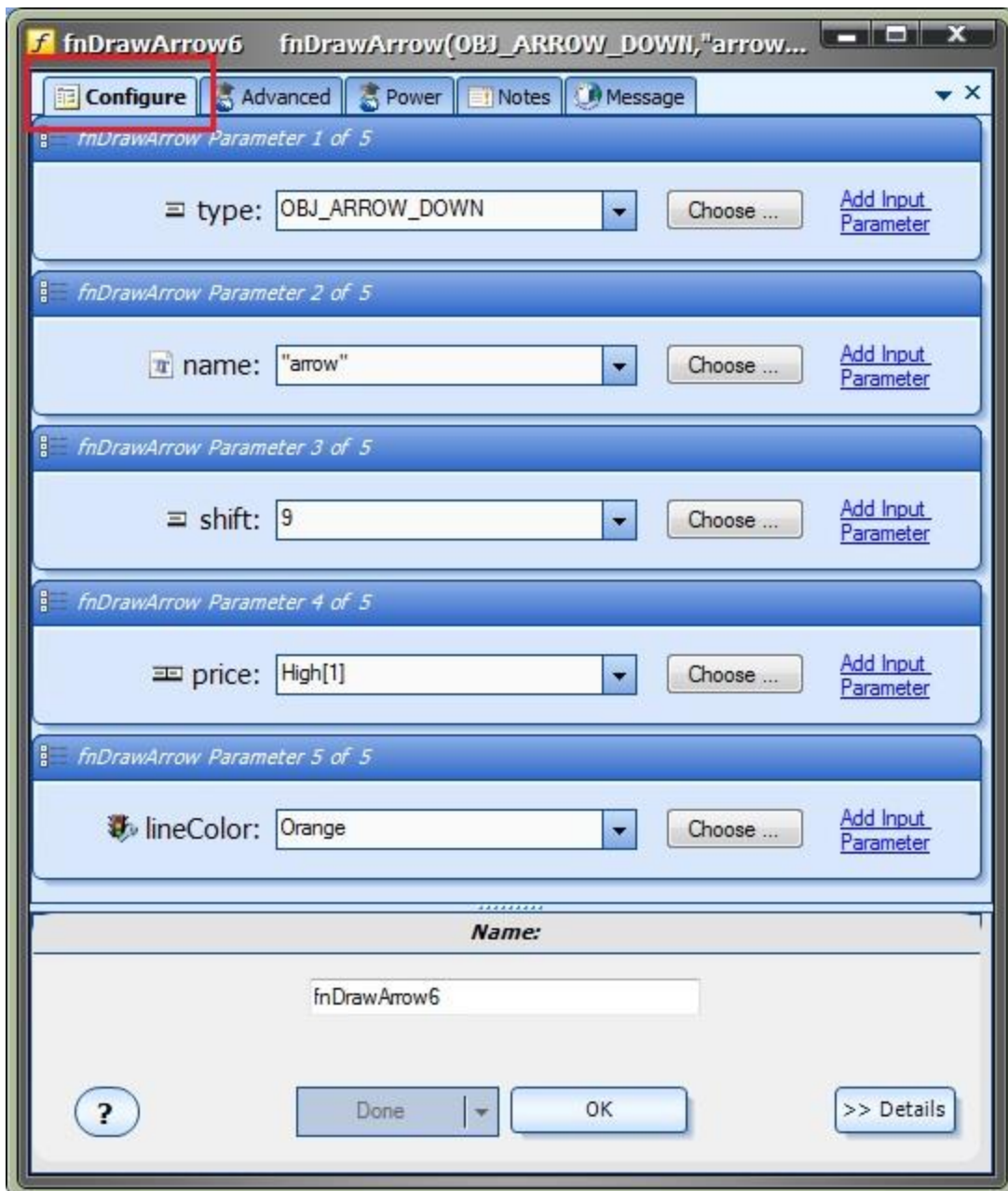
The [Function Configuration](#) window allows you to select values for each parameter.

Each Chart Object function offers a number of parameters on the **Configuration** Tab, and also a number of parameters on the **Advanced** Tab.

- Parameters on the **Configuration** Tab should be inspected and set each time the function is added to a drawing.
- Parameters on the **Advanced** Tab usually do not need to be changed from their default values.

Parameters on the Configuration Tab

Parameter Name	Data type	Description
type	Integer	Type of arrow. The pull-down menu offers these choices: OBJ_ARROW_UP OBJ_ARROW_DOWN
name	String	The name of the object. Each object on a chart must have a unique name. Note: String parameters require enclosing quotes. Objects names can viewed from the MetaTrader platform by going to: Charts->Objects->Object List
shift	Integer	The candle shift used to position the object's vertical location on the price chart.
price	Double	The price value used to position the object's horizontal location on the price chart.
lineColor	Color	The color of the object.



Parameters on the *Advanced* Tab

Parameter Name	Data type	Description
redraw	Integer	<p>The interval when to redraw the object. The pull-down menu offers these choices:</p> <p>REDRAW_ONCE: draw the object once only.</p> <p>REDRAW_BAR: redraw the object on each new bar.</p> <p>REDRAW_TICK: redraw the object on each new tick.</p> <p>Note: The object function must be connected on the drawing so that it executes on each tick for the redraw options to work correctly.</p> <p>Objects that use the shift parameter will move on the chart as new candles are formed.</p>
size	Integer	The size of the object.
lineStyle	Integer	<p>The line style. The pull-down menu offers these choices:</p> <p>STYLE_SOLID STYLE_DASH STYLE_DOT STYLE_DASHDOT STYLE_DASHDOTDOT</p> <p>Note: Styles only work when the size is 1.</p>
chartID	Integer	The chart identifier. Use 0 for the current chart.
windowID	Integer	The window identifier. Use 0 for the current window.



fnDrawThumb

The **fnDrawThumb** is used to draw an up or down thumb on a price chart. It is positioned by price and shift value.

After the **fnDrawThumb** function has been added to a [Drawing](#), it is configured by clicking the (+) button along the bottom of the [Element](#).

The [Function Configuration](#) window allows you to select values for each parameter.

Each Chart Object function offers a number of parameters on the **Configuration** Tab, and also a number of parameters on the **Advanced** Tab.

- Parameters on the **Configuration** Tab should be inspected and set each time the function is added to a drawing.
- Parameters on the **Advanced** Tab usually do not need to be changed from their default values.

Parameters on the *Configuration* Tab

Parameter Name	Data type	Description
type	Integer	Type of thumb. The pull-down menu offers these choices: OBJ_ARROW_THUMB_UP OBJ_ARROW_THUMB_DOWN
name	String	The name of the object. Each object on a chart must have a unique name. Note: String parameters require enclosing quotes. Objects names can viewed from the MetaTrader platform by going to: Charts->Objects->Object List
shift	Integer	The candle shift used to position the object's vertical location on the price chart.
price	Double	The price value used to position the object's horizontal location on the price chart.
lineColor	Color	The color of the object.



Parameters on the *Advanced* Tab

Parameter Name	Data type	Description
redraw	Integer	<p>The interval when to redraw the object. The pull-down menu offers these choices:</p> <p>REDRAW_ONCE: draw the object once only.</p> <p>REDRAW_BAR: redraw the object on each new bar.</p> <p>REDRAW_TICK: redraw the object on each new tick.</p> <p>Note: The object function must be connected on the drawing so that it executes on each tick for the redraw options to work correctly.</p> <p>Objects that use the shift parameter will move on the chart as new candles are formed.</p>
size	Integer	The size of the object.
lineStyle	Integer	<p>The line style. The pull-down menu offers these choices:</p> <p>STYLE_SOLID</p> <p>STYLE_DASH</p> <p>STYLE_DOT</p> <p>STYLE_DASHDOT</p> <p>STYLE_DASHDOTDOT</p> <p>Note: Styles only work when the size is 1.</p>
chartID	Integer	The chart identifier. Use 0 for the current chart.
windowID	Integer	The window identifier. Use 0 for the current window.



fnDrawLabel

The **fnDrawLabel** is used to draw a label containing text on a price chart. It is positioned by absolute x and y values.

After the **fnDrawLabel** function has been added to a [Drawing](#), it is configured by clicking the (+) button along the bottom of the [Element](#).

The [Function Configuration](#) window allows you to select values for each parameter.

Each Chart Object function offers a number of parameters on the **Configuration** Tab, and also a number of parameters on the **Advanced** Tab.

- Parameters on the **Configuration** Tab should be inspected and set each time the function is added to a drawing.
- Parameters on the **Advanced** Tab usually do not need to be changed from their default values.

Parameters on the Configuration Tab

Parameter Name	Data type	Description
name	String	The name of the object. Each object on a chart must have a unique name. Note: String parameters require enclosing quotes. Objects names can viewed from the MetaTrader platform by going to: Charts->Objects->Object List
text	String	The text to be written on the chart. Note: String parameters require enclosing quotes
x	Integer	The x coordinate value used to position the object's horizontal location on the price chart. Note: The chart position where x and y are 0 is the bottom left corner of the chart.
y	Integer	The y coordinate value used to position the object's vertical location on the price chart. Note: The chart position where x and y are 0 is the bottom left corner of the chart.
fontColor	Color	The color of the font.
font	String	The name of the font.

fnDrawLabel2
fnDrawLabel("label","hello world" + Symbol(...

Configure

Advanced

Notes

Message

fnDrawLabel

Parameter 1 of 6

name:

"label"

Choose ...

Add Input
Parameter

fnDrawLabel

Parameter 2 of 6

text:

"hello world" + Symbol()

Choose ...

Add Input
Parameter

fnDrawLabel

Parameter 3 of 6

x:

200

Choose ...

Add Input
Parameter

fnDrawLabel

Parameter 4 of 6

y:

200

Choose ...

Add Input
Parameter

fnDrawLabel

Parameter 5 of 6

fontColor:

Black

Choose ...

Add Input
Parameter

fnDrawLabel

Parameter 6 of 6

font:

"Arial"

Choose ...

Add Input
Parameter

Name:

fnDrawLabel2

?

Done

OK

>> Details

Parameters on the *Advanced* Tab

Parameter Name	Data type	Description
redraw	Integer	The interval when to redraw the object. The pull-down menu offers these choices: REDRAW_ONCE : draw the object once only. REDRAW_BAR : redraw the object on each new bar. REDRAW_TICK : redraw the object on each new tick. Note: The object function must be connected on the drawing so that it executes on each tick for the redraw options to work correctly. Objects that use the shift parameter will move on the chart as new candles are formed.
fontSize	Integer	The size of the font.
chartID	Integer	The chart identifier. Use 0 for the current chart.
windowID	Integer	The window identifier. Use 0 for the current window.



fnDrawText

The **fnDrawText** is used to draw a label containing text on a price chart. It is positioned by price and candle.

After the **fnDrawText** function has been added to a [Drawing](#), it is configured by clicking the (+) button along the bottom of the [Element](#).

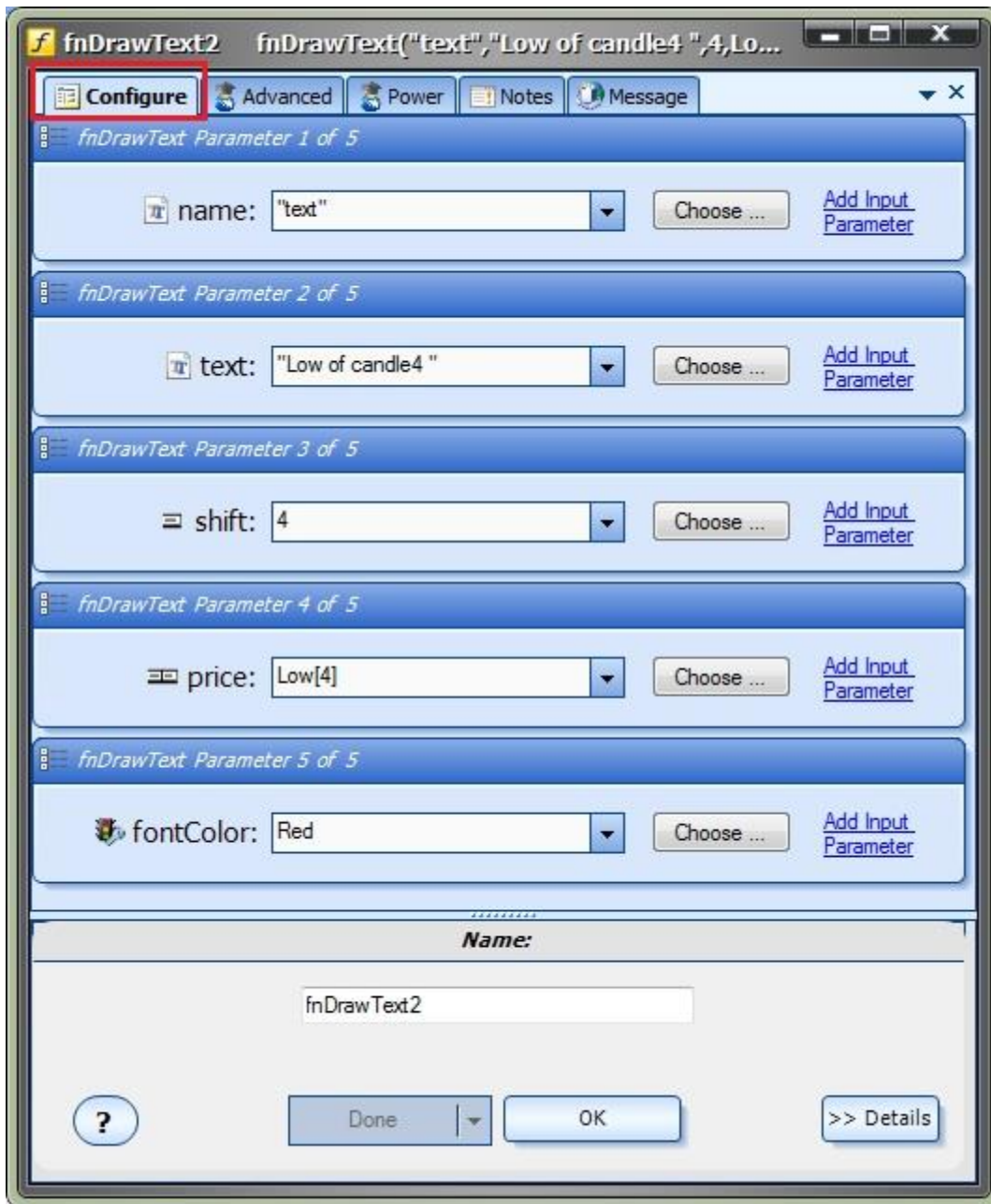
The [Function Configuration](#) window allows you to select values for each parameter.

Each Chart Object function offers a number of parameters on the **Configuration** Tab, and also a number of parameters on the **Advanced** Tab.

- Parameters on the **Configuration** Tab should be inspected and set each time the function is added to a drawing.
- Parameters on the **Advanced** Tab usually do not need to be changed from their default values.

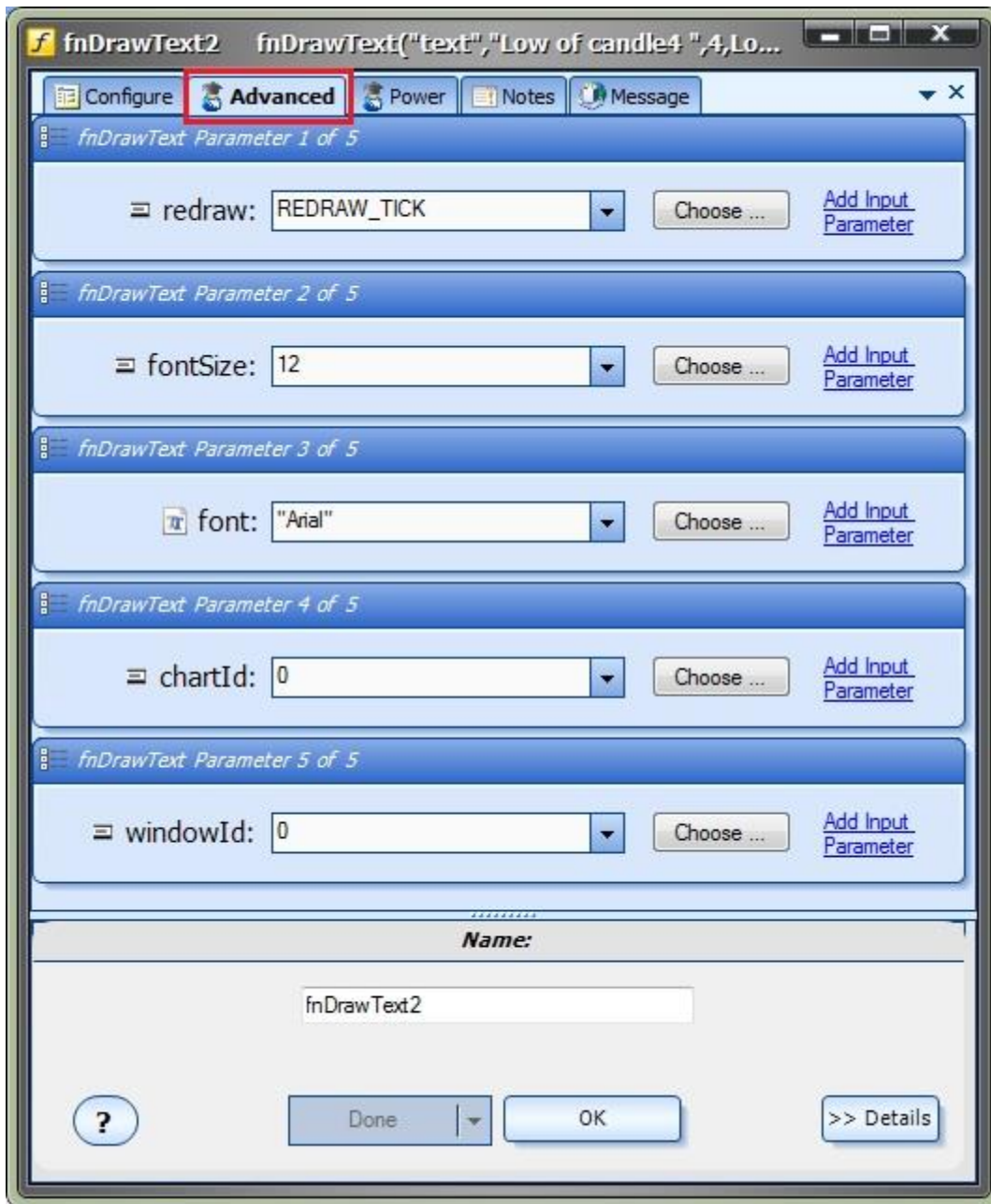
Parameters on the Configuration Tab

Parameter Name	Data type	Description
name	String	The name of the object. Each object on a chart must have a unique name. Note: String parameters require enclosing quotes. Objects names can viewed from the MetaTrader platform by going to: Charts->Objects->Object List
text	String	The text to be written on the chart. Note: String parameters require enclosing quotes
shift	Integer	The candle shift used to position the object's vertical location on the price chart.
price	Double	The price value used to position the object's horizontal location on the price chart.
fontColor	Color	The color of the font.



Parameters on the *Advanced* Tab

Parameter Name	Data type	Description
redraw	Integer	<p>The interval when to redraw the object. The pull-down menu offers these choices:</p> <p>REDRAW_ONCE: draw the object once only.</p> <p>REDRAW_BAR: redraw the object on each new bar.</p> <p>REDRAW_TICK: redraw the object on each new tick.</p> <p>Note: The object function must be connected on the drawing so that it executes on each tick for the redraw options to work correctly.</p> <p>Objects that use the shift parameter will move on the chart as new candles are formed.</p>
fontSize	Integer	The size of the font.
font	String	The name of the font.
chartID	Integer	The chart identifier. Use 0 for the current chart.
windowID	Integer	The window identifier. Use 0 for the current window.



fnDrawCheckSign

The **fnDrawCheckSign** is used to draw a check mark on a price chart. It is positioned by price and candle.

After the **fnDrawCheckSign** function has been added to a [Drawing](#), it is configured by clicking the (+) button along the bottom of the [Element](#).

The [Function Configuration](#) window allows you to select values for each parameter.

Each Chart Object function offers a number of parameters on the **Configuration** Tab, and also a number of parameters on the **Advanced** Tab.

- Parameters on the **Configuration** Tab should be inspected and set each time the function is added to a drawing.
- Parameters on the **Advanced** Tab usually do not need to be changed from their default values.

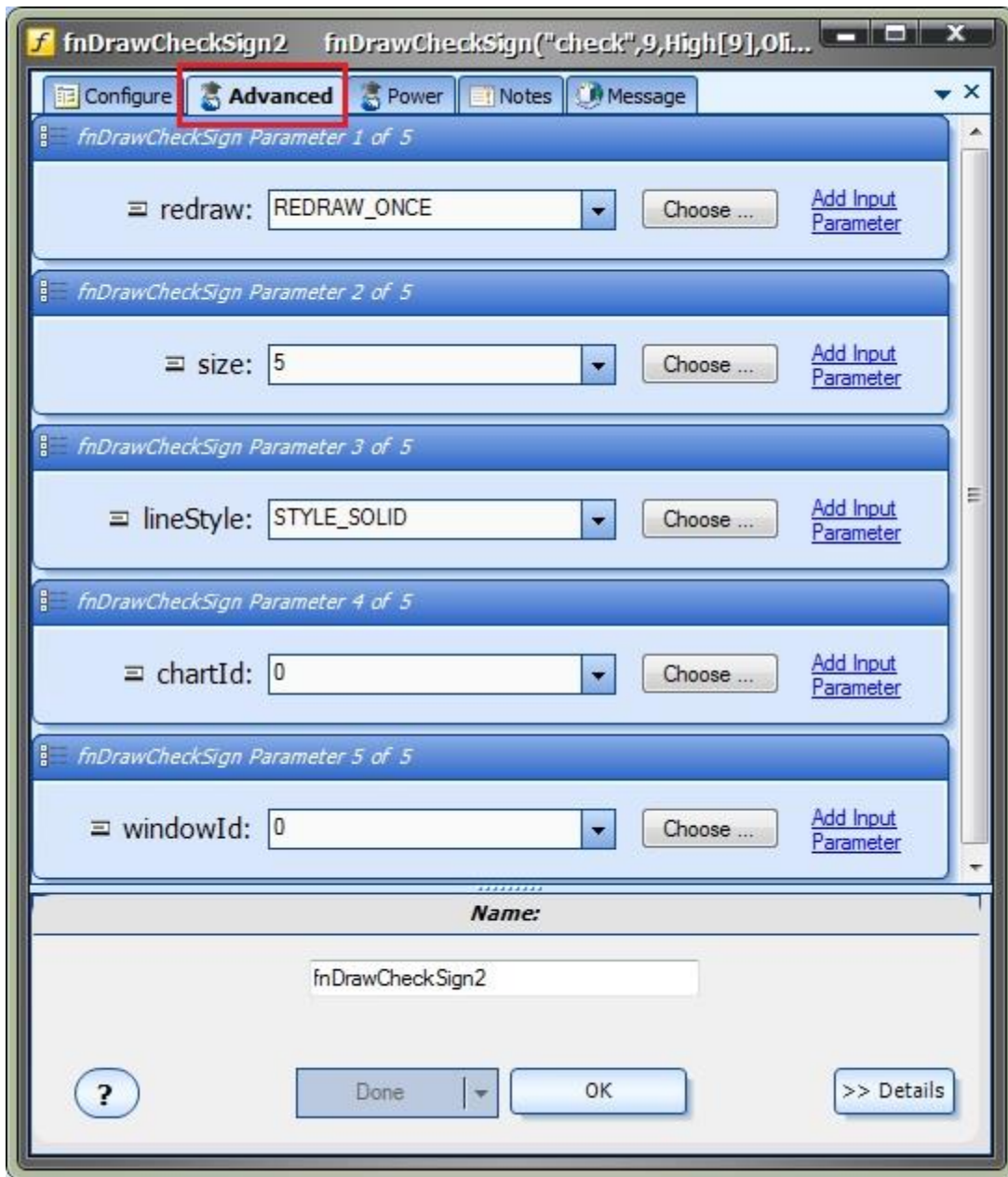
Parameters on the *Configuration* Tab

Parameter Name	Data type	Description
name	String	The name of the object. Each object on a chart must have a unique name. Note: String parameters require enclosing quotes. Objects names can viewed from the MetaTrader platform by going to: Charts->Objects->Object List
shift	Integer	The candle shift used to position the object's vertical location on the price chart.
price	Double	The price value used to position the object's horizontal location on the price chart.
lineColor	Color	The color of the object.



Parameters on the *Advanced* Tab

Parameter Name	Data type	Description
redraw	Integer	<p>The interval when to redraw the object. The pull-down menu offers these choices:</p> <p>REDRAW_ONCE: draw the object once only.</p> <p>REDRAW_BAR: redraw the object on each new bar.</p> <p>REDRAW_TICK: redraw the object on each new tick.</p> <p>Note: The object function must be connected on the drawing so that it executes on each tick for the redraw options to work correctly.</p> <p>Objects that use the shift parameter will move on the chart as new candles are formed.</p>
size	Integer	The size of the object.
lineStyle	Integer	<p>The line style. The pull-down menu offers these choices:</p> <p>STYLE_SOLID STYLE_DASH STYLE_DOT STYLE_DASHDOT STYLE_DASHDOTDOT</p> <p>Note: Styles only work when the size is 1.</p>
chartID	Integer	The chart identifier. Use 0 for the current chart.
windowID	Integer	The window identifier. Use 0 for the current window.



fnDrawStopSign

The **fnDrawStopSign** is used to draw a stop sign on a price chart. It is positioned by price and candle.

After the **fnDrawStopSign** function has been added to a [Drawing](#), it is configured by clicking the (+) button along the bottom of the [Element](#).

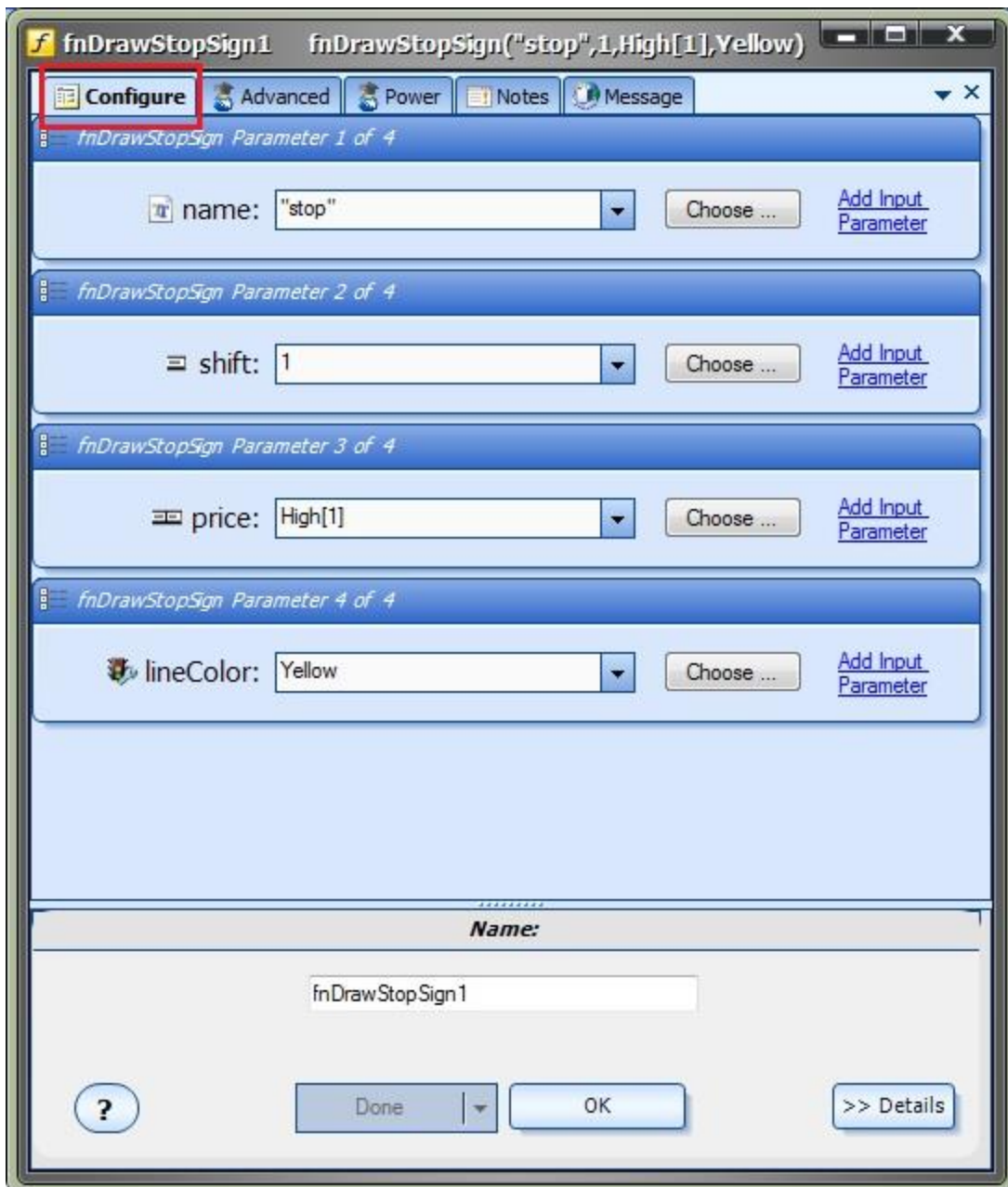
The [Function Configuration](#) window allows you to select values for each parameter.

Each Chart Object function offers a number of parameters on the **Configuration** Tab, and also a number of parameters on the **Advanced** Tab.

- Parameters on the **Configuration** Tab should be inspected and set each time the function is added to a drawing.
- Parameters on the **Advanced** Tab usually do not need to be changed from their default values.

Parameters on the *Configuration* Tab

Parameter Name	Data type	Description
name	String	The name of the object. Each object on a chart must have a unique name. Note: String parameters require enclosing quotes. Objects names can viewed from the MetaTrader platform by going to: Charts->Objects->Object List
shift	Integer	The candle shift used to position the object's vertical location on the price chart.
price	Double	The price value used to position the object's horizontal location on the price chart.
lineColor	Color	The color of the object.



Parameters on the *Advanced* Tab

Parameter Name	Data type	Description
redraw	Integer	<p>The interval when to redraw the object. The pull-down menu offers these choices:</p> <p>REDRAW_ONCE: draw the object once only.</p> <p>REDRAW_BAR: redraw the object on each new bar.</p> <p>REDRAW_TICK: redraw the object on each new tick.</p> <p>Note: The object function must be connected on the drawing so that it executes on each tick for the redraw options to work correctly.</p> <p>Objects that use the shift parameter will move on the chart as new candles are formed.</p>
size	Integer	The size of the object.
lineStyle	Integer	<p>The line style. The pull-down menu offers these choices:</p> <p>STYLE_SOLID STYLE_DASH STYLE_DOT STYLE_DASHDOT STYLE_DASHDOTDOT</p> <p>Note: Styles only work when the size is 1.</p>
chartID	Integer	The chart identifier. Use 0 for the current chart.
windowID	Integer	The window identifier. Use 0 for the current window.



Chart Objects on the Drawing Pad

The Chart Object functions are dragged, dropped and connected from the [Toolbox](#) onto the [Drawing Pad](#) just like any other [function](#) in VTS.

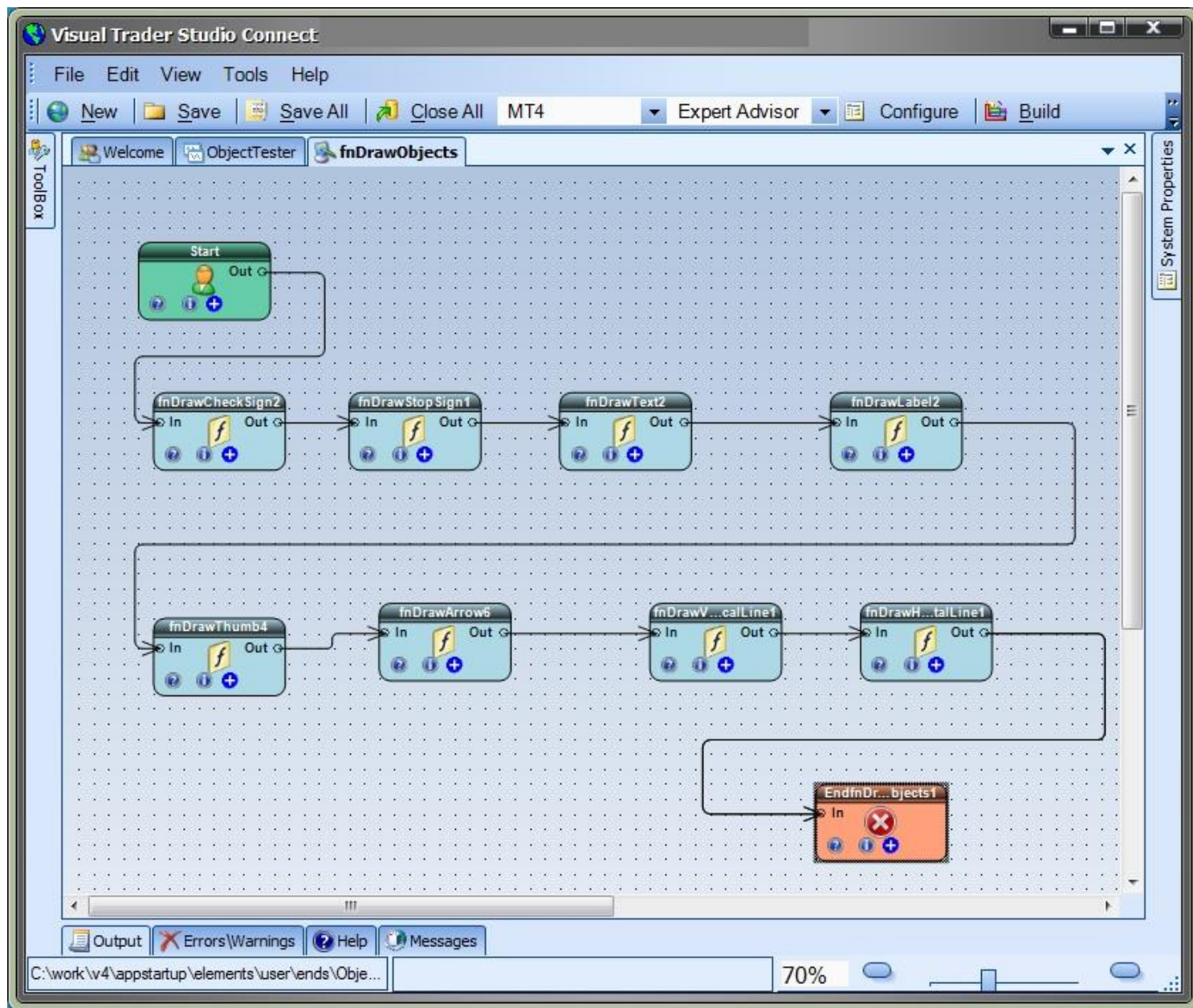


Chart Objects on a MetaTrader Price Chart

This price chart shows each of the Chart Object types.

