

Order History Plug-in

Requires VTS-Connect minimum version 4.0.0.69

Use the **Order History** plug-in to get information about your closed trades. With the **Order History** plug-in, you can get *any* information about your closed trades. Keep emotions out of your trading by creating rock-solid rules about when to keep trading in the face of multiple winning or losing trades.

What is a Plug-in?

VTS stands for **Visual Traders Studio**.

The VTS *Expert Advisor* Builder is a Windows graphical application that enables non-programmers to build complex Expert Advisors by dragging, dropping and connecting logical elements.

The VTS application contains basic functionality to build almost any Expert Advisor.

A **VTS Plug-in** allows traders to easily implement advanced trading techniques using an add-on user interface.



Contents

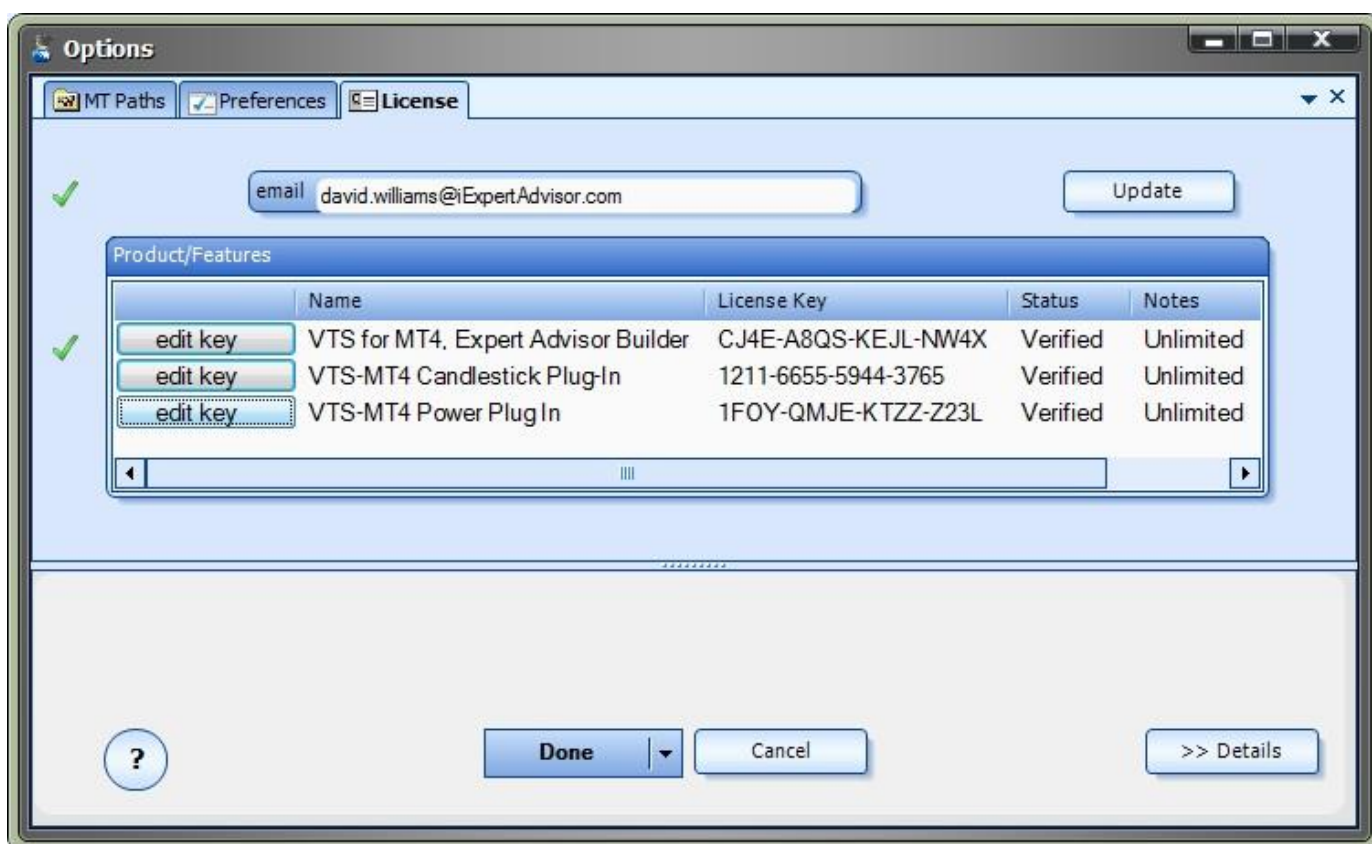
Enable the Order History Plug-in	3
Order History Functions in the Toolbox.....	4
Order History Functions.....	5
fnGetHistoryInfo	6
fnGetLastTradeDuration	8
fnGetLastClosedTradeSymbol.....	9
fnGetConsecutiveCount.....	10
fnGetLargestProfit.....	12
fnGetLargestLoss.....	14
Order History on the Drawing Pad.....	16

Enable the Order History Plug-in

You must enter your License key to enable the **Order History Plug-in**. Your license key for all of your VTS products can be found in the [Members Area](#).

License keys are entered in Visual Traders Studio (VTS) from the License entry tab.

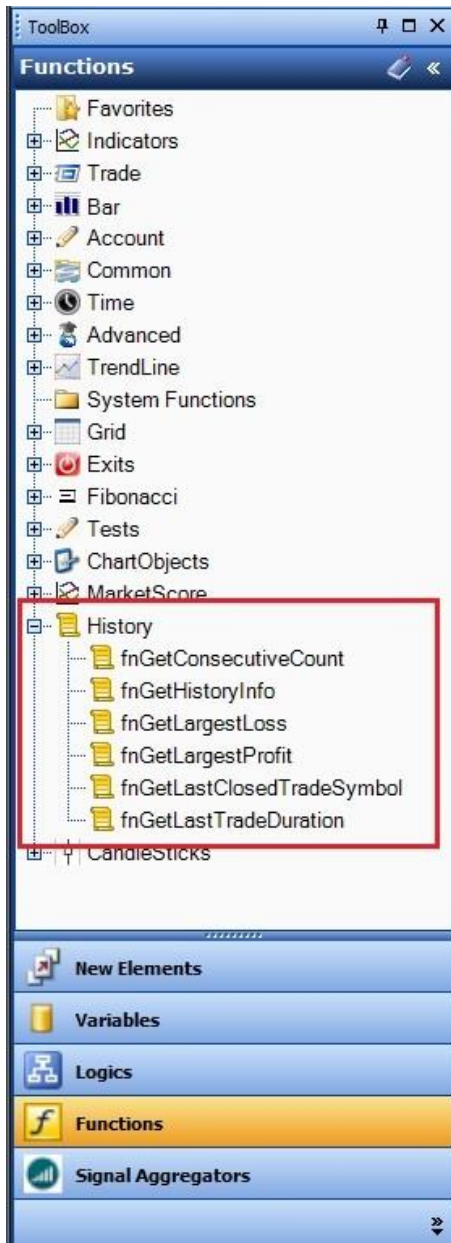
- The **email** address is the email address used to purchase [VTS](#).
- The **License Key** is the key listed in the Members Area.
- The **Update** button is used to verify the email address and license key.
- The **edit key** button is used edit the key value.



Order History Functions in the Toolbox

Once enabled, the **Order History** functions are available in the [Toolbox](#) Function tab under the **History** menu.

These functions are dragged and dropped from the Toolbox onto the [Drawing Pad](#) like any other functions.



Order History Functions

The **Order History** function library includes these functions:

- The [fnGetHistoryInfo](#) function is used to get information about a closed order.
- The [fnGetLastTradeDuration](#) is used to get the duration, in minutes, of the last closed trade.
- The [fnGetLastClosedTradeSymbol](#) is used to get the currency symbol of the last closed trade.
- The [fnGetConsecutiveCount](#) function is used to get the number of the last consecutive winning or losing trades.
- The [fnGetLargestProfit](#) function is used to find the largest profit of a closed trade within the last X trades or minutes.
- The [fnGetLargestLoss](#) function is used to find the largest loss of a closed trade within the last X trades or minutes.

fnGetHistoryInfo

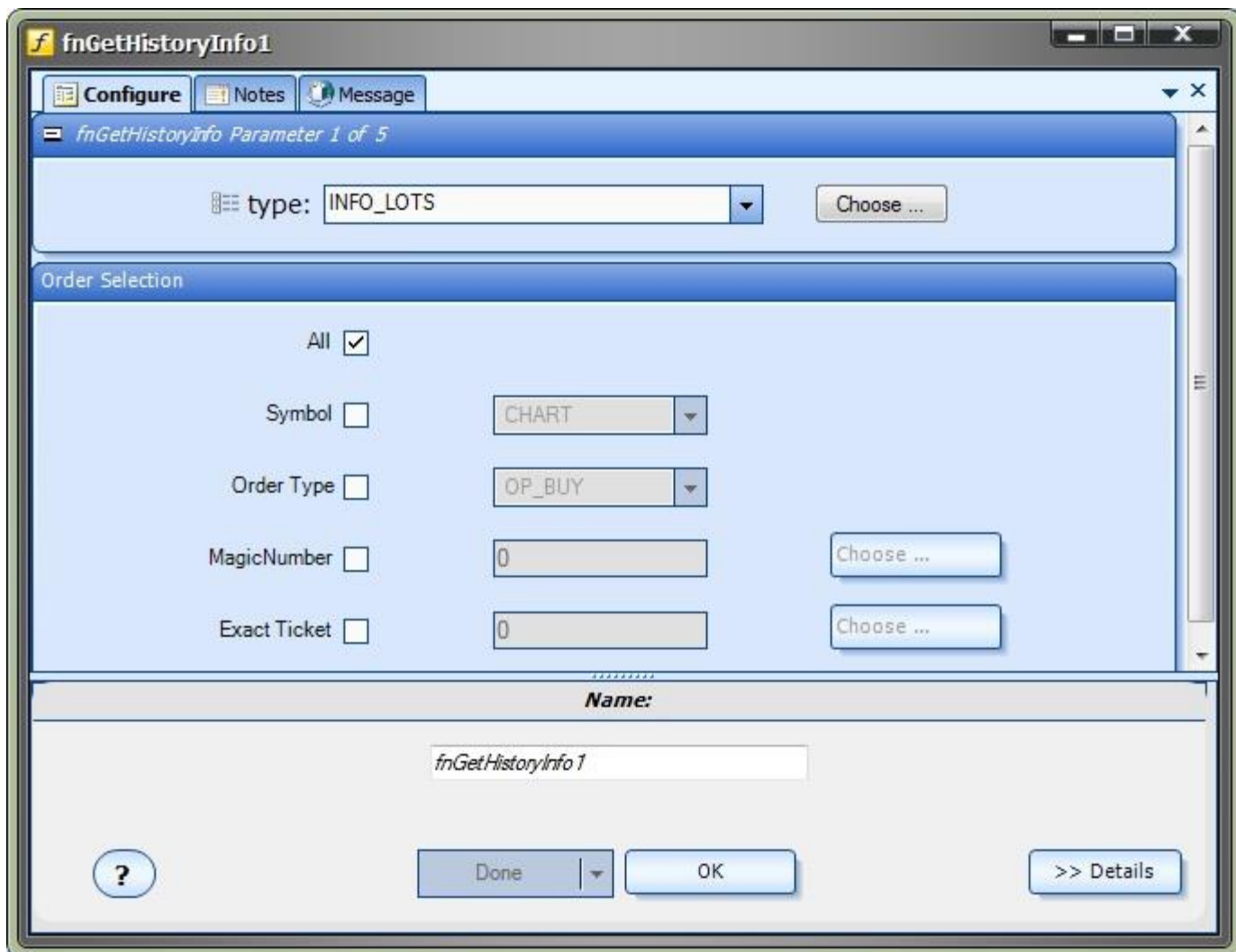
The **fnGetHistoryInfo** is used to get information about the last closed trade on the account.

- After the **fnGetHistoryInfo** function has been added to a [Drawing](#), it is configured by clicking the (+) button along the bottom of the [Element](#).
- The [Function Configuration](#) window allows you to select values for each parameter.
- Parameters on the **Configuration** Tab should be inspected and set each time the function is added to a drawing.

Parameters on the Configuration Tab

The following table provides information about each [parameter](#) of the **fnGetHistoryInfo** function.

InfoType	<p>The type of information requested (that matches the Order Selection criteria):</p> <p>INFO_LOTS: Get the lot size of the last closed order. INFO_MAGICNUMBER : Get the magic number of the last closed order. INFO_OPENPRICE : Get the open price of the last closed order. INFO_CLOSEPRICE : Get the closed price of the last closed order. INFO_OPENTIME : Get the open time of the last closed order. INFO_CLOSETIME : Get the close time of the last closed order. INFO_PROFIT : Get the profit of the last closed order. (this value can be negative) INFO_STOPLOSS : Get the stoploss of the last closed order. INFO_TAKEPROFIT : Get the takeprofit of the last closed order. INFO_SWAP : Get the swap value of the last closed order. INFO_TICKET : Get the ticket of the last closed order. INFO_ORDERTYPE : Get the order type of the last closed order.</p>
Order Selection	<p>Determines what orders of the Account are queried.</p> <ul style="list-style-type: none"> • All: all open orders on the account. • Symbol: only open orders matching the selected symbol. • Order Type: only open orders of the selected order type. • MagicNumber: only open orders with a matching magicnumber. • Exact Ticket: only open orders with the matching order ticket. <p>Note: Selecting Exact Ticket disables all other selection criteria.</p>



fnGetLastTradeDuration

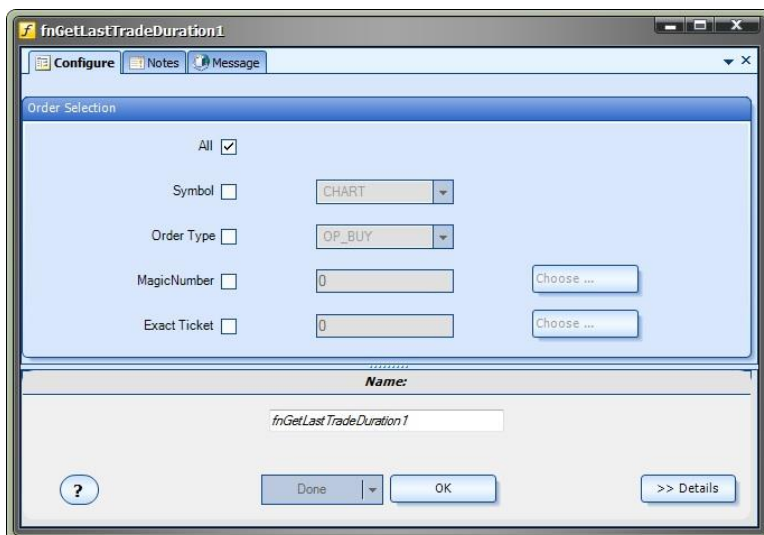
The **fnGetLastTradeDuration** is used to get the duration, **in minutes**, of the last closed trade on the account that matches the selection criteria..

- After the **fnGetLastTradeDuration** function has been added to a [Drawing](#), it is configured by clicking the (+) button along the bottom of the [Element](#).
- The [Function Configuration](#) window allows you to select values for each parameter.
- Parameters on the **Configuration** Tab should be inspected and set each time the function is added to a drawing.

Parameters on the Configuration Tab

The following table provides information about each [parameter](#) of the **fnGetLastTradeDuration** function.

Order Selection	<p>Determines what orders of the Account are queried.</p> <ul style="list-style-type: none">• All: all open orders on the account.• Symbol: only open orders matching the selected symbol.• Order Type: only open orders of the selected order type.• MagicNumber: only open orders with a matching magicnumber.• Exact Ticket: only open orders with the matching order ticket. <p>Note: Selecting Exact Ticket disables all other selection criteria.</p>
------------------------	--



fnGetLastClosedTradeSymbol

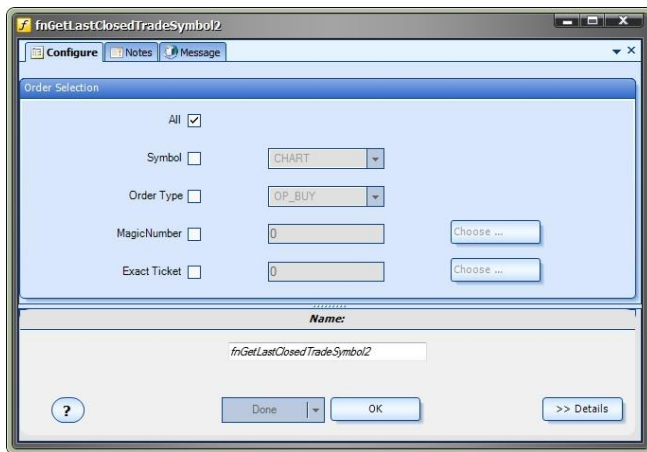
The **fnGetLastClosedTradeSymbol** is used to get the currency symbol of the last closed trade on the account that matches the selection criteria..

- After the **fnGetLastClosedTradeSymbol** function has been added to a [Drawing](#), it is configured by clicking the (+) button along the bottom of the [Element](#).
- The [Function Configuration](#) window allows you to select values for each parameter.
- Parameters on the **Configuration** Tab should be inspected and set each time the function is added to a drawing.

Parameters on the Configuration Tab

The following table provides information about each [parameter](#) of the **fnGetLastClosedTradeSymbol** function.

Order Selection	<p>Determines what orders of the Account are queried.</p> <ul style="list-style-type: none">• All: all open orders on the account.• Symbol: only open orders matching the selected symbol.• Order Type: only open orders of the selected order type.• MagicNumber: only open orders with a matching magicnumber.• Exact Ticket: only open orders with the matching order ticket. <p>Note: Selecting Exact Ticket disables all other selection criteria.</p>



fnGetConsecutiveCount

The **fnGetConsecutiveCount** is used to get the currency symbol of the last closed trade on the account that matches the selection criteria.

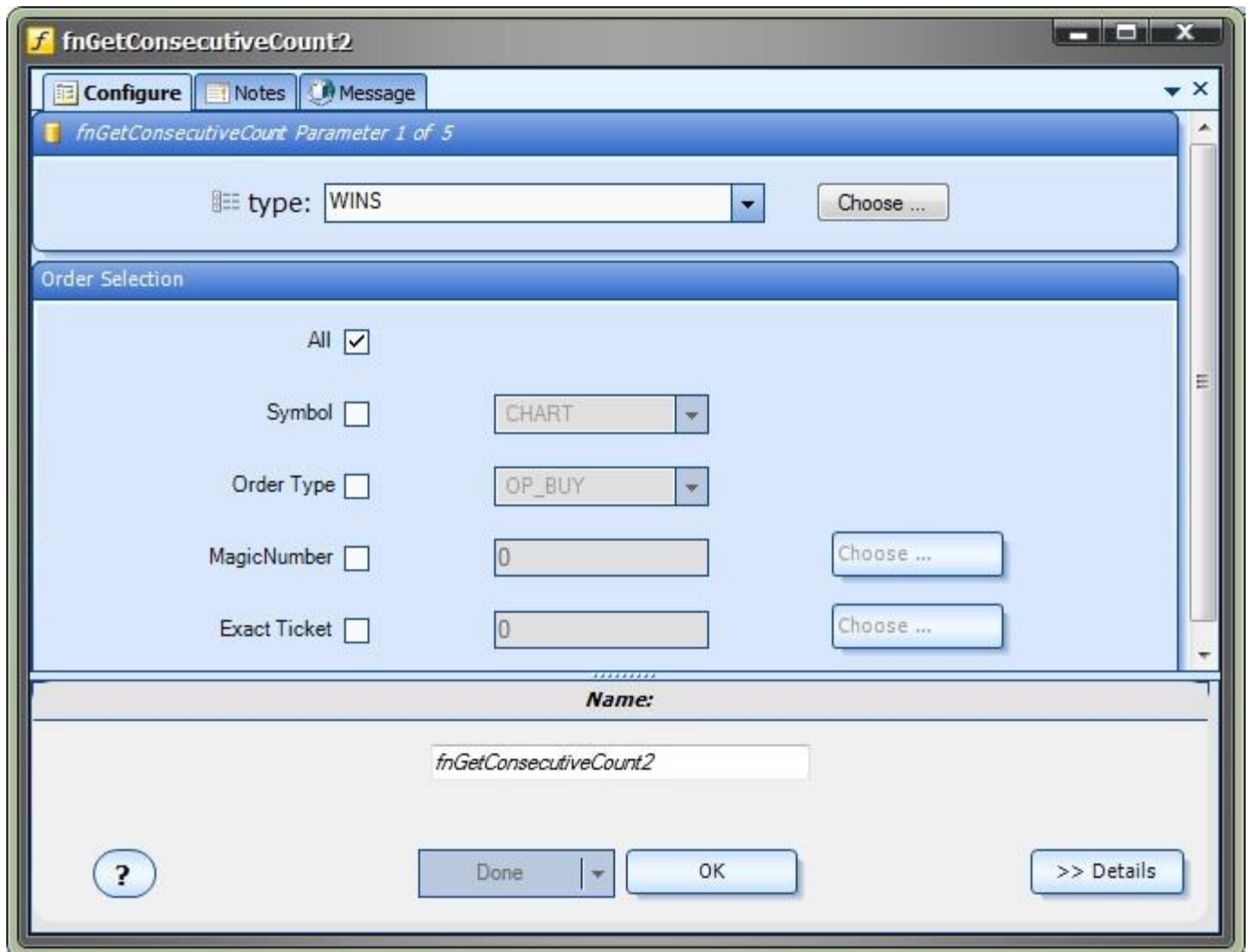
For example:

- If the last closed trade was profitable, the number of consecutive WINS is 1, and the number of consecutive losses is 0.
 - If the last 2 closed trades were profitable, the number of consecutive WINS is 2, and the number of consecutive losses is 0.
- After the **fnGetConsecutiveCount** function has been added to a [Drawing](#), it is configured by clicking the (+) button along the bottom of the [Element](#).
 - The [Function Configuration](#) window allows you to select values for each parameter.
 - Parameters on the **Configuration** Tab should be inspected and set each time the function is added to a drawing.

Parameters on the Configuration Tab

The following table provides information about each [parameter](#) of the **fnGetConsecutiveCount** function.

type	The type of trades: WINS: returns the number of consecutive winning trades (profit greater than or equal to zero). LOSSES: returns the number of consecutive losing trades (profit less than zero).
Order Selection	Determines what orders of the Account are queried. <ul style="list-style-type: none">● All: all open orders on the account.● Symbol: only open orders matching the selected symbol.● Order Type: only open orders of the selected order type.● MagicNumber: only open orders with a matching magicnumber.● Exact Ticket: only open orders with the matching order ticket. <p>Note: Selecting Exact Ticket disables all other selection criteria.</p>



fnGetLargestProfit

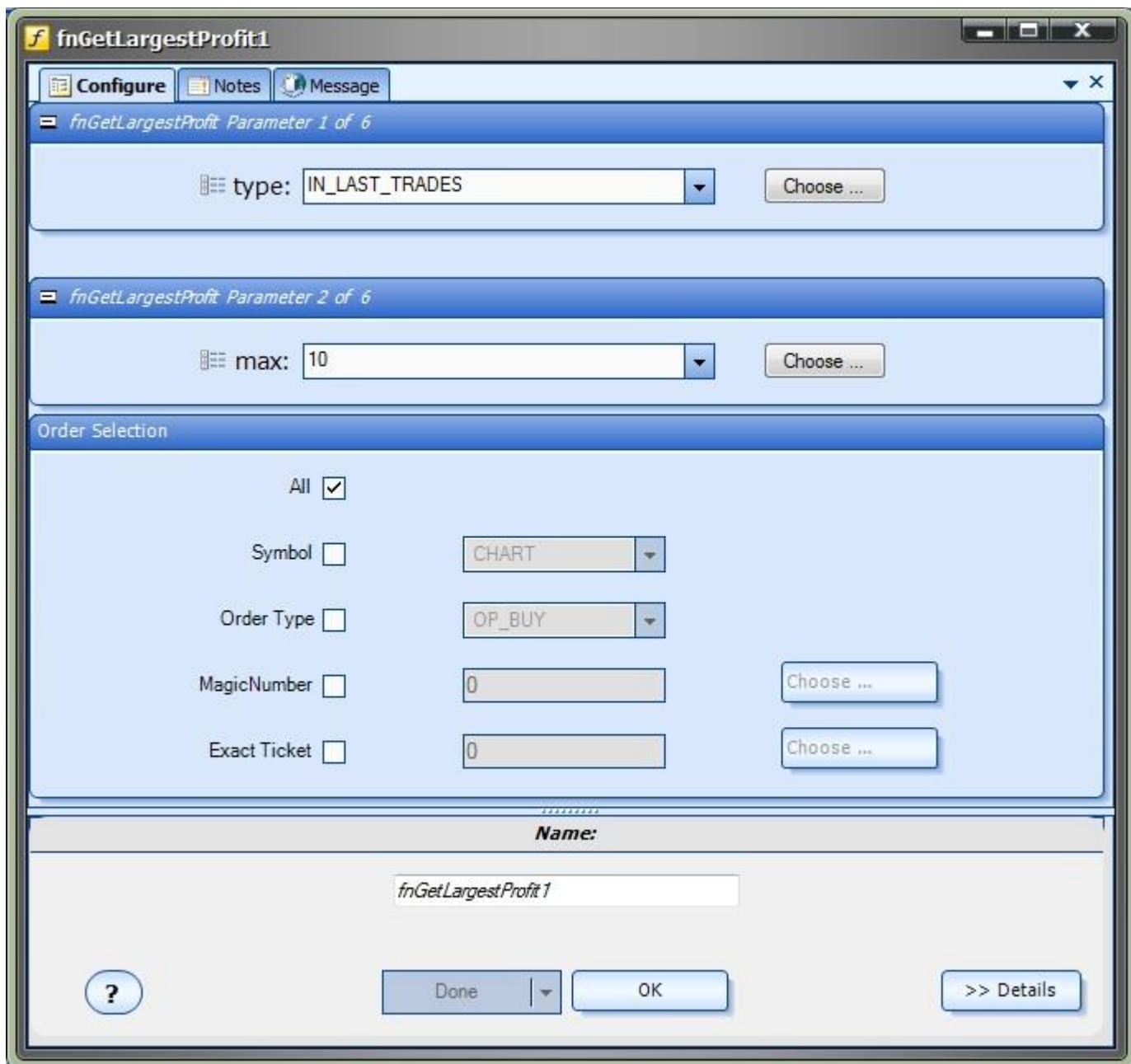
The **fnGetLargestProfit** is used to get the largest profit of a closed trade that matches the selection criteria.

- After the **fnGetLargestProfit** function has been added to a [Drawing](#), it is configured by clicking the (+) button along the bottom of the [Element](#).
- The [Function Configuration](#) window allows you to select values for each parameter.
- Parameters on the **Configuration** Tab should be inspected and set each time the function is added to a drawing.

Parameters on the Configuration Tab

The following table provides information about each [parameter](#) of the **fnGetLargestProfit** function.

type	The type of trades: IN_LAST_TRADES: Considers the last max number of closed trades to calculate the largest profit. IN_LAST_MINUTES: Considers the closed trades in the last max minutes to calculate the largest profit.
max	The number of minutes or trades to consider when calculating the largest profit. The default value is 10.
Order Selection	Determines what orders of the Account are queried. <ul style="list-style-type: none">• All: all open orders on the account.• Symbol: only open orders matching the selected symbol.• Order Type: only open orders of the selected order type.• MagicNumber: only open orders with a matching magicnumber.• Exact Ticket: only open orders with the matching order ticket. <p>Note: Selecting Exact Ticket disables all other selection criteria.</p>



fnGetLargestLoss

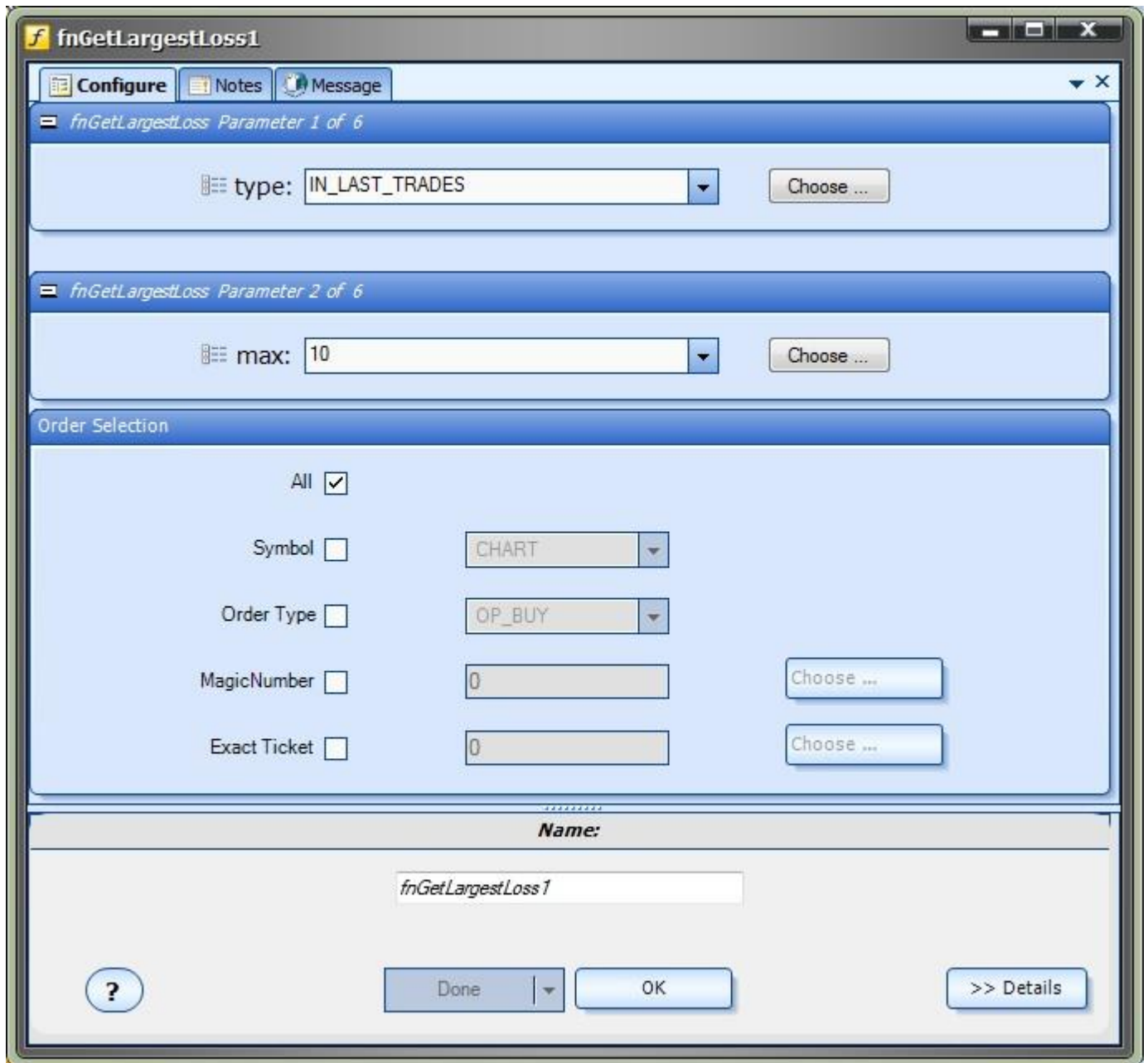
The **fnGetLargestLoss** is used to get the largest profit of a closed trade that matches the selection criteria.

- After the **fnGetLargestLoss** function has been added to a [Drawing](#), it is configured by clicking the (+) button along the bottom of the [Element](#).
- The [Function Configuration](#) window allows you to select values for each parameter.
- Parameters on the **Configuration** Tab should be inspected and set each time the function is added to a drawing.

Parameters on the Configuration Tab

The following table provides information about each [parameter](#) of the **fnGetLargestLoss** function.

type	The type of trades: IN_LAST_TRADES: Considers the last max number of closed trades to calculate the largest loss. IN_LAST_MINUTES: Considers the closed trades in the last max minutes to calculate the largest loss.
max	The number of minutes or trades to consider when calculating the largest loss. The default value is 10.
Order Selection	Determines what orders of the Account are queried. <ul style="list-style-type: none">• All: all open orders on the account.• Symbol: only open orders matching the selected symbol.• Order Type: only open orders of the selected order type.• MagicNumber: only open orders with a matching magicnumber.• Exact Ticket: only open orders with the matching order ticket. <p>Note: Selecting Exact Ticket disables all other selection criteria.</p>



Order History on the Drawing Pad

The **Order History** functions are dragged, dropped and connected from the [Toolbox](#) onto the [Drawing Pad](#) just like any other [function](#) in VTS.

- This drawing uses the [fnGetHistoryInfo](#) function, saved as **lastProfit**, to get the profit of the last closed trade.
- If the last trade resulted in a loss, the [fnOpenOrder](#) function is executed to open another order.

